



## Element CFF ½ Zip Sweatshirt

KOI2270



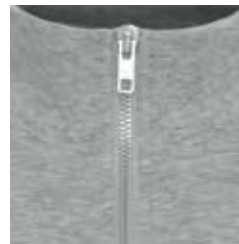
### Product Features:

- 12.8-oz, 76/24 cotton/polyester
- Combed and RING SPUN cotton
- 100% cotton-face fleece (solid colours)
- Cotton-rayon face fleece (heathers)
- 24 singles yarn
- 3-end fleece
- Superior printing surface
- **OEKO-TEX® STANDARD 100**

Adult sizes: XS-4XL



YKK zipper



## Available Colours and PMS Colours

Textile fabric colours are subject to dye lot variation and will not be exact match to print Pantone reference



**ONYX**  
Black 6C



**GREY  
HEATHER\***  
Cool Grey 5C



**MIDNIGHT  
BLUE**  
4280C



**BLUE MIST**  
3526C



**SAHARA**  
7528C

# KOI2270 - KOI® Element CFF ½ Zip Sweatshirt

## Garment Measurements

Size	XS	S	M	L	XL	2XL	3XL	4XL
Chest - Half Measure	18"	20"	22"	24"	26"	28"	30"	32"
Chest - Full Measure	36"	40"	44"	48"	52"	56"	60"	64"
Body Length from HPS	26 1/2"	27 1/2"	28 1/2"	29 1/2"	30 1/2"	31 1/2"	32 1/2"	33 1/2"
Sleeve Length - CB	33 1/2"	34 1/2"	35 1/4"	36"	36 3/4"	37 1/2"	38 1/4"	39"

Finished measurements in inches. Refer to "How to Measure" guide for detailed information on measurement instructions.

## Adult General Sizing Guide

Size	XS	S	M	L	XL	2XL	3XL	4XL
Chest	30"-32"	34"-36"	38"-40"	42"-44"	46"-48"	50"-52"	54"-55"	56"-57"
Waist	26"-29"	29"-32"	32"-35"	35"-38"	38"-41"	41"-44"	44"-47"	47"-50"
Sleeve Length - CB	31"-32"	32"-33 1/2"	34"-35"	35"-36"	36"-37"	37"-38"	38"-39"	38 1/2"-39"

## Decoration Recommendations

### PRINT WITHOUT RESTRICTIONS

This 100% cotton\* face fleece has no printing restrictions. One of our most versatile fleece fabrics, featuring a 100% cotton face in the solid colours that allows decorators to achieve ultra-fine print details.

Refer to curing temperatures for the type of inks used.

Here are some popular print methods that will capture fine lines and details.

- DTG (Direct-to-Garment)
- DTF (Direct-to-Film)
- SCREEN PRINT
- EMBROIDERY

\*Check the fabrication on the Heathers.